



Joint Authority Support for Children, Families and Schools



Joint Authority Support for Children, Families and Schools



How to contact us:

The Sensory Support Service
www.sensorysupportservice.org.uk

Tel: 0117 9038442

Fax: 0117 9038440

João Roe

Head of Service

Elmfield House

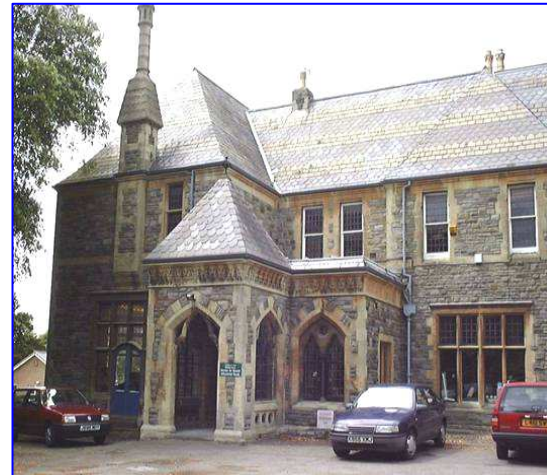
Greystoke Avenue

Westbury-on-Trym

Bristol

BS10 6AY

Email: joao.roe@bristol.gov.uk



Sensory Support Service Information for Parents and Carers

Do you have a child with Vision, Hearing or Multi Sensory Impairment?

Would you like to know more about:-

- how to promote your child's learning?
- technology that can help your child?
- how your child's condition impacts on their learning?
- would you like to meet other parents?

Directions to Elmfield House



David Lloyd Leisure Centre
Elmfield House

Map ref: <http://www.gosur.com/en/point/2880232/>

It is the role of the Sensory Support Service to minimise the disabling impact of sensory impairment and to ensure positive outcomes for Children and Young People with sensory impairment.

The Sensory Support Service can support you so contact us and find out how we can meet your needs.



The service is a reflective organisation with children and families at the centre. The team provides highly effective intervention for pupils.
(Inspection report, December 2013)

What does the Sensory Support Service do?

Our aim is that children and young people have the best opportunities in life to thrive, succeed, reach their aspirations and have the best possible quality of life.



To achieve this we will work with you soon after diagnosis to give information, to listen to you, your concerns and hopes and to help you promote your child's development. We will also work within early years' settings and schools and collaborate with a range of other professionals.

The Sensory Support Service employs high quality specialist teachers and other professionals who have the knowledge and experience in working with children and young people with sensory impairment.

Our Teachers hold mandatory qualifications in the field and all staff are up to date with new developments and technologies.

The Sensory Support Service runs a range of family sessions for early years' children.....

Explorers/Bubbles



Specialist staff, from the Sensory Support Service run Early Years Groups at the Woodside Family Centre (Tuesday a.m.) and at Elmfield House (Monday a.m.)

Parents and carers stay at the sessions with their children and siblings are welcome.



ACORNS



Is a group for families with babies and young children who have a hearing loss. We meet every Wednesday morning during term time from 10.30am to 12pm. Brothers and sisters are also welcome. This is a group for the whole family!



Little Squirrels

Is a weekly group run by Sign Language Communication Advisers who are deaf and who use British Sign Language (BSL) in designed programmes with the children.